

Deltek Vision® Government Forms Module

Create a Winning Impression and Automate
Your SF330

Benefits of the Deltek Vision Government Forms Module

- One source of proposal information
- Pre-populate SF330
- Easy retrieval of key project data

The US federal government is one of the largest purchasers of architecture, engineering, construction, planning and environmental services in the world. But competition for these contracts is fierce, and the marketing process and complex proposal forms can be overwhelming.

The Deltek Vision Government Forms Module allows your firm to showcase its unique message and value offering, provide the information in a format mandated by federal government agencies and automate the Standard Form 330 (SF330).

The ability to showcase your firm's relevant projects through the SF330 is critical to win work with the Federal Government.

With Vision's Government Forms Module, you can accurately complete the SF330 with ease. Access features such as:

- A resume builder tool
- The SF330 Project Team Matrix Generator
- Easy-to-use templates– finalise your forms in Microsoft Word with customised fonts, project graphics and company logos

Integrate with Deltek Vision or Use as a Stand-Alone System

The Government Forms Module can be deployed as a standalone module or as an integrated part of the Deltek Vision suite of products.

As an integrated system, all of your firm information and credentials are at your fingertips and most can be included in any style of proposal, including SF330, SF 254/255. The result is one central source of information for all of your proposal and marketing requirements.

By using Vision CRM's powerful opportunity tracking capabilities, proposal data will seamlessly flow into the Government Forms Module, pre-populating up to 60% of the SF330 and simplifying selections in other parts of the form.

As a standalone system, the Vision Government Forms module can import information from virtually any database without the need to re-enter critical data.

**World Headquarters:
United States**

13880 Dulles Corner Ln
Herndon, VA 20171
800.456.2009

**Regional Headquarters:
United Kingdom**

1 Warwick Row
London
SW1E 5ER
+44 (0) 20 7518-5010

Denmark

Vordingborggade 18-22
DK - 2100 Copenhagen Ø
+45 35 27 79 00

Australia

6th floor
182 Victoria Square
Adelaide
South Australia 5000
+61 8 8112 1200

deltek.com
info@deltek.com

**Retrieve Key Information through a
Powerful Search Engine**

The Government Forms Module automates the production of SF330 proposals and ensures information is consistent among sections, all while adhering to stringent information constraints imposed by federal regulations.

With its relational database of client, employee, consultant and project data, this powerful search engine seamlessly retrieves key information that is specific to each SF330. Complex matrices are automatically populated, saving considerable time and effort.

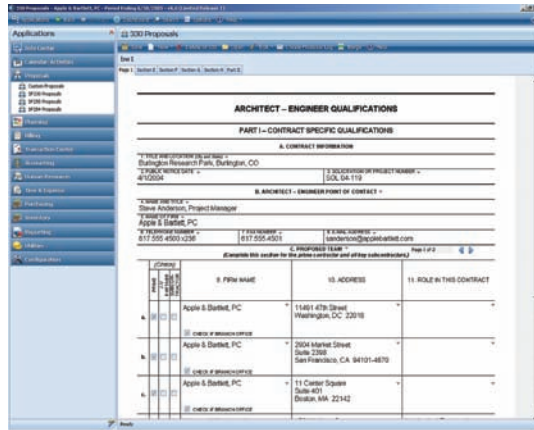


Figure 1: The Government Forms Module allows you to quickly and accurately complete the SF330.

Give Your Firm the Winning Edge

Firms that are not prepared to submit a SF330 that adheres to federal agency requirements risk missing out on valuable opportunities. Assure your firm has a strong competitive advantage – automate the submittal process today with the Deltek Vision Government Forms Module.

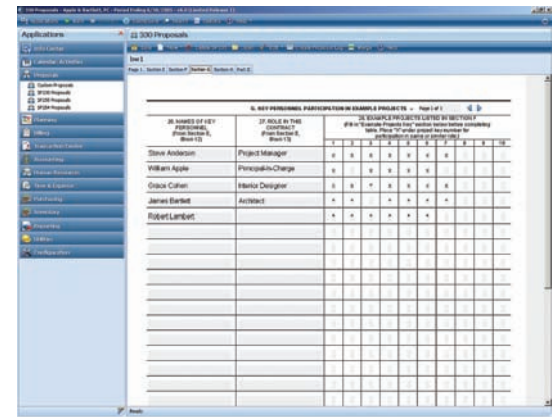


Figure 2: The Section G matrix is automatically populated completely and accurately, saving considerable time and effort.

Deltek (Nasdaq: PROJ) is the leading global provider of enterprise software and information solutions for professional services firms, government contractors, and government agencies. For decades, we have delivered actionable insight that empowers our customers to unlock their business potential. Over 14,000 organizations and 1.8 million users in approximately 80 countries around the world rely on Deltek to research and identify opportunities, win new business, optimize resources, streamline operations, and deliver more profitable projects. Deltek – Know more. Do more.® deltek.com